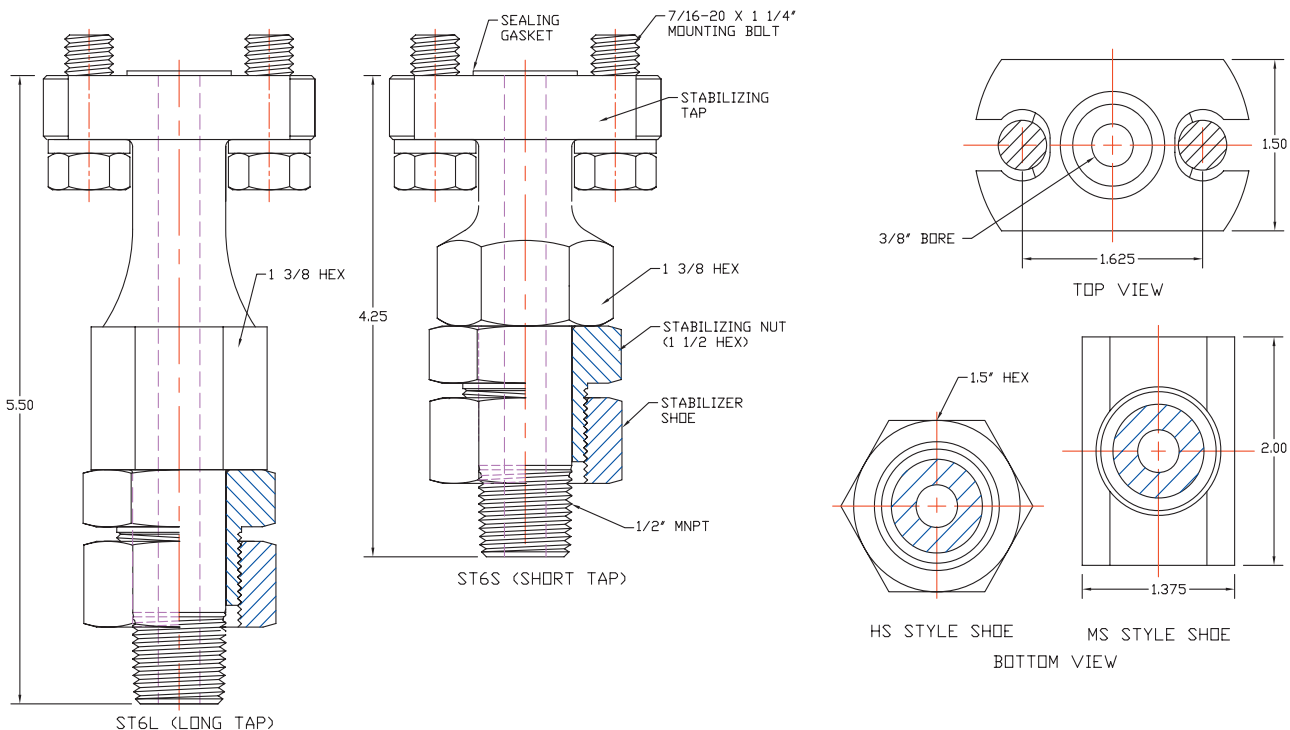


Phoenix Precision's stabilizer taps are designed for both the engineer and instrumentation technician. The 6ST is designed in both carbon and stainless steel, in short and long configurations for different clearance requirements, and with two different style shoes for both round (i.e.: orifice flange unions) and flat (i.e.: sensor fittings) surfaces. The slotted bolt holes will accommodate 2 1/8" to 2 1/4" bolt spacing. The shoes create a larger footprint which transfers the radial load away from the NPT threads. Dielectric gaskets are available as an option to provide a non-conductive barrier between the instrument and the meter run. The 6ST also provides wrench flats for quick and easy installation.



MODEL NUMBERING SYSTEM

Phoenix	Orifice Size	Type	Tap Length	Inlet Size	Inlet Type	Outlet Type	Material	Shoe Type	Dielectric Option
P	6=3/8"	ST	L=Long	8=1/2"	M=MNPT	IF=INTEGRAL FLANGE	SS=ASTM A182 316 /316L	HS=Hex Style for Flat Surface	DI=Dielectric
			S=Short				CS=ASTM A108 CS	MS=Shoe Style for Round Surface	
Example: P6ST6L8MIFSSHS = 3/8" Bore, 1/2" MNPT Inlet, Integral Flange Outlet, 316SS, Hex Shoe									
P	6	ST	L	8	M	IF	SS	HS	



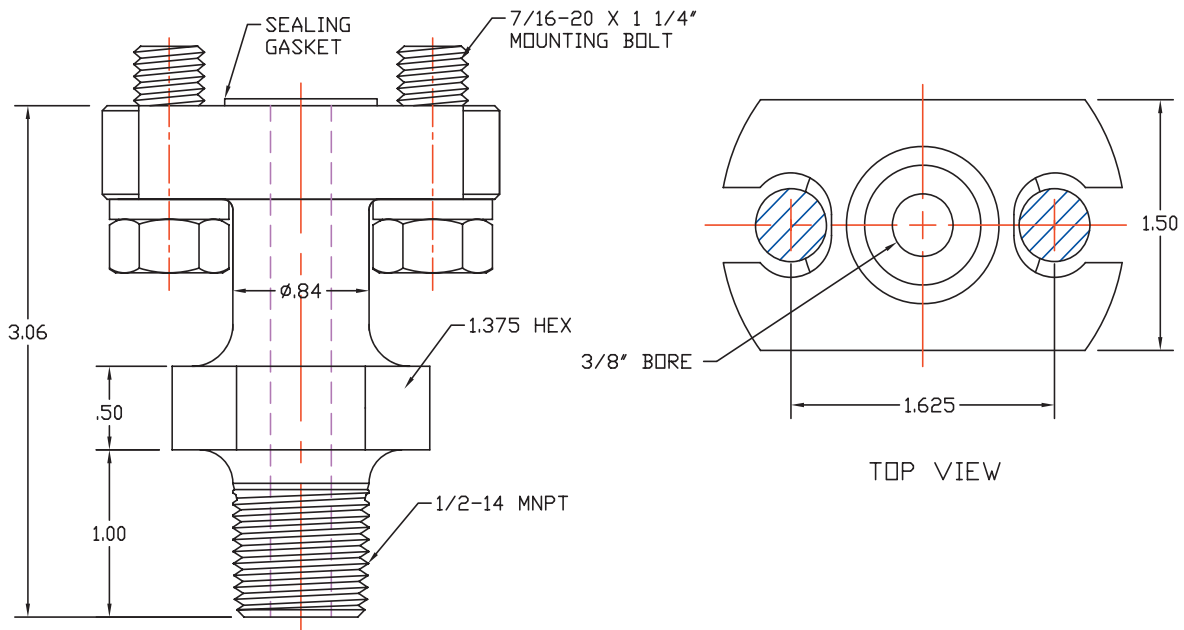


Phoenix Precision's 6FB (Futbol) is designed for lightweight, vertical, close couple installations. This is a non-stabilized futbol and should not be used in high vibration services or in services featuring large loads. The 6FB features a 3/8" bore design and is available in either carbon steel or 316 stainless steel. The 6FB comes complete with wrench flats to facilitate installation.



MODEL NUMBERING SYSTEM

Phoenix	Orifice Size	Type	Inlet Size	Inlet Type	Outlet Type	Material	Dielectric Option
P	6=3/8"	FB	8=1/2"	M=MNPT	IF=INTEGRAL FLANGE	SS=ASTM A182 316/316L CS=ASTM A108 CS	DI=Dielectric
Example: P6FB8MIFSS = 3/8" Bore, Static Adapter, 1/2" MNPT Inlet, Integral Flange Outlet, 316SS							
P	6	FB	8	M	IF	SS	



For further information please contact:
Phoenix Precision Ltd.
2620 21st Street N.E.
Calgary, Alberta T2E 7L3
Phone:(403) 291-3154
Fax: (403) 291-3292
email: phoenix@phoenixprecision.ca
www.phoenixprecision.ca

Distributor:

Phoenix Precision Ltd. (PPL) provides the information herein in good faith but makes no representation as to its comprehensiveness or accuracy. This data sheet is intended only as a guide to PPL products and services. Individuals using this data sheet must exercise independent judgment in evaluating product selection and determining product appropriateness for their particular purpose and system requirements. PPL MAKES NO REPRESENTATIONS OR WARRANTIES, EITHER EXPRESS OR IMPLIED, INCLUDING WITHOUT LIMITATION ANY WARRANTIES OF MERCHANTABILITY OR FITNESS FOR A PARTICULAR PURPOSE WITH RESPECT TO THE INFORMATION SET FORTH HEREIN OR THE PRODUCT(S) TO WHICH THE INFORMATION REFERS. ACCORDINGLY, PPL WILL NOT BE RESPONSIBLE FOR DAMAGES (OF ANY KIND OR NATURE, INCLUDING INCIDENTAL, INDIRECT, OR CONSEQUENTIAL DAMAGES) RESULTING FROM THE USE OF OR RELIANCE UPON THIS INFORMATION. Patents and Patents Pending in the U.S. and foreign countries. PPL reserves the right to change product designs and specifications without notice.