

Double Block & Bleed Gauge Valve



FEATURES:

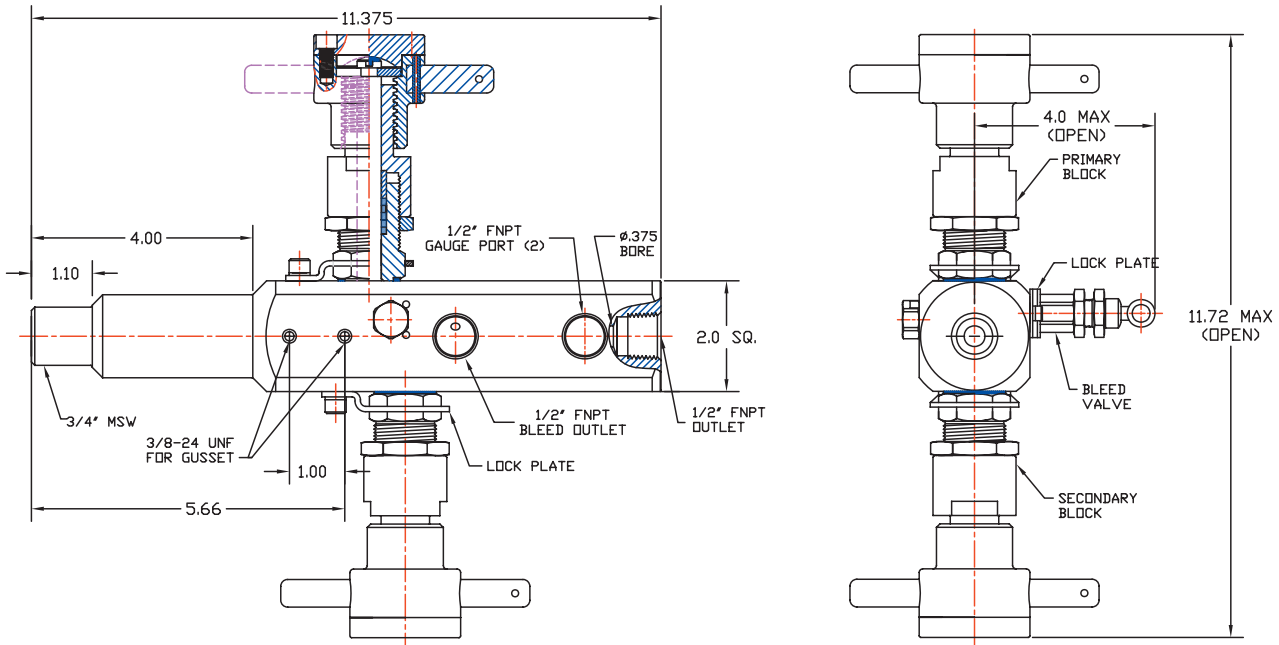
- Double Block & Bleed Gauge Valve
- Integral Hard Seat, Globe Pattern
- 3/8" Primary Bore
- Grafoil™ packing (Teflon™ Free)
- Non-Rotating Stem, Silicon Nitride Ball Tip, On Blocks;
- Needle Stem on Bleed, All Stems Blowout Proof
- Rating: 41370 KPa @ 38°C (6000 psi @ 100°F)
 (2500#Ansi Class)
- ABSA Design CRN# 0C06740.2
- Manufactured to ASME B16.34
- Fire Safe Design to API 6FA
- 14.5 LBS Weight (Include 4 Plugs and 2 Gusset Bolts)
- Laser Etching



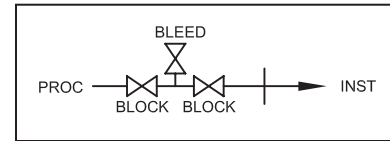
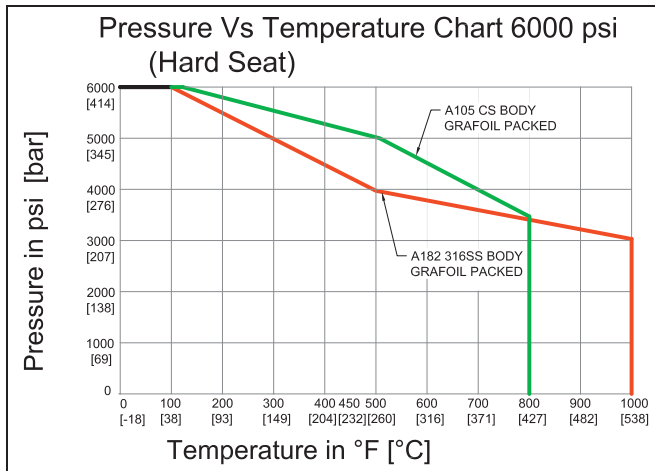
MODEL NUMBERING SYSTEM

PHOENIX	ORIFICE SIZE	TYPE	INLET SIZE	INLET TYPE	SCHEDULE (for butt-weld inlet)	OUTLET SIZE	OUTLET TYPE	BODY MATERIAL	TRIM MATERIAL	PACKING	STEM TIP	STEM TYPE	OPTIONAL STEM MATERIAL
P	6=6/16" =3/8"	GDBB6H	8=1/2"	M=Male NPT	40S= SCH 40S	8=1/2"	F=Female NPT	SS=ASTM A182 F316/316L	same as body	G= Grafoil™	BC= Ceramic Ball	NR=Non-Rotating	
			12=3/4"	MS=Male socket weld	80S= SCH 80S	12=3/4"		S317=ASTM A182 F317/317L	same as body		B= 316SS Ball		
			16=1"	BW=Male Butt-weld	160S= SCH 160S	16=1"		S310=ASTM A182 F310H	same as body				
			*75=3/4"	R150F=150# Raised Face Flange	XXH= SCH XXH		IF=Integral 2 Bolt Flange	S321=ASTM A182 F321SS	same as body				
			*100=1"	R300F=300# Raised Face Flange				S347=ASTM A182 F347SS	same as body				
			*150=1.5"	R600F=600# Raised Face Flange				C5=ASTM A350 LF2	316SS				
			*200=2"					SC=ASTM A105	316SS				S410 =410SS
								C4=ASME SA105	316SS				
								S22=DUPLEX 2205	same as body				
								F5=A182 F5	Stem - 316SS Bonnet -same as body				
							F9=A182 F9						
							F11=A182 F11						
							F22=A182 F22						
								N6=Inconel™ 625	same as body				
								N8=Inconel™ 825	same as body				
								N20=Alloy 20	same as body				
e.g.: P6GDBB6H12MS8FSSGBC-NR = 3/8" Bore, 3/4" Male Socket Weld Inlet, 1/2" FNPT Outlet, 316SS Body, Grafoil™ Packing, Ceramic Ball Tip, Non-Rotating Stem													
P	6	GDBB6H	12	MS		8	F	SS		G	BC	NR	
e.g.: P6GDBB6H12BWXXHIF11GBC-NR = 3/8" Bore, 3/4" BW(XXH) Inlet, Integral 2 Bolt Flange Outlet, F11 Body, Grafoil™ Packing, Ceramic Ball Tip, Non-Rotating stem													
P	6	GDBB6H	12	BW	XXH		IF	F11		G	BC	NR	
e.g.: P6GDBB6H100R300F8FSCGBC-NR = 3/8" Bore, 1" 300# RF Flange Inlet, 1/2" FNPT Outlet, A105CS Body, Grafoil™ Packing, Ceramic Ball Tip, Non-Rotating Stem													
P	6	GDBB6H	100	R300F		8	F	SC		G	BC	NR	
NOTE: 1. * Only for raised face flange inlet.													

Double Block & Bleed Gauge Valve



MODEL: P6GDBB6H12MS8FSSGBC-NR



Note: Body material specifications based on ASME B16.34 - 2004. Packing materials based on manufacturers' specifications. Approximations only. Phoenix does not represent these values as finite. They are provided only as representative values.

For further information please contact:

Phoenix Precision Ltd.
2620 21st Street N.E.
Calgary, Alberta T2E 7L3
Phone: (403) 291-3154
Fax: (403) 291-3292
email: phoenix@phoenixprecision.ca
www.phoenixprecision.ca

Distributor:



Phoenix Precision Ltd. (PPL) provides the information herein in good faith but makes no representation as to its comprehensiveness or accuracy. This data sheet is intended only as a guide to PPL products and services. Individuals using this data sheet must exercise independent judgment in evaluating product selection and determining product appropriateness for their particular purpose and system requirements. PPL MAKES NO REPRESENTATIONS OR WARRANTIES, EITHER EXPRESS OR IMPLIED, INCLUDING WITHOUT LIMITATION ANY WARRANTIES OF MERCHANTABILITY OR FITNESS FOR A PARTICULAR PURPOSE WITH RESPECT TO THE INFORMATION SET FORTH HEREIN OR THE PRODUCT(S) TO WHICH THE INFORMATION REFERS. ACCORDINGLY, PPL WILL NOT BE RESPONSIBLE FOR DAMAGES (OF ANY KIND OR NATURE, INCLUDING INCIDENTAL, INDIRECT, OR CONSEQUENTIAL DAMAGES) RESULTING FROM THE USE OF OR RELIANCE UPON THIS INFORMATION. Patents and Patents Pending in the U.S. and foreign countries. PPL reserves the right to change product designs and specifications without notice.

DELFIN, VITON and TEFLON are registered trademarks (hereinafter referred to as TM) of E.I. Du Pont De Nemours and Company Corporation. PEEK is a registered TM of Whitford Worldwide Company and Whitford B.V. KEL-F is a registered TM of M.W. Kellogg Company. GRAFOIL is a registered TM of High Temperature Materials Inc. and Graftech INC. Corporation. AFLAS is a registered TM of Asahi Glass Co. Ltd. Corporation Japan. MONEL and INCONEL are registered TMs of Huntington Alloys Corporation. HASTELLOY is a registered TM of Haynes International, Inc.